

AENC-LSTC-ENG-DWG-0002

Norwich to Tilbury

Volume 2: Plans, Drawings and Sections

Document: 2.16 Trees and Hedgerows to be Removed and or
Managed Plans - Section G

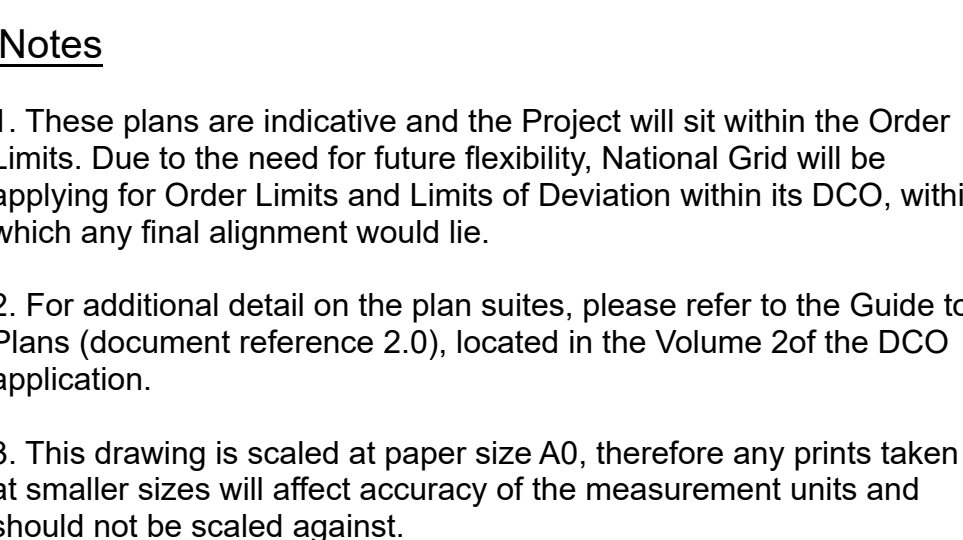
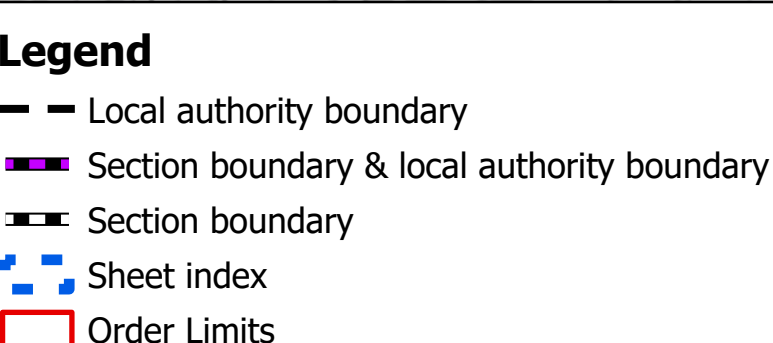
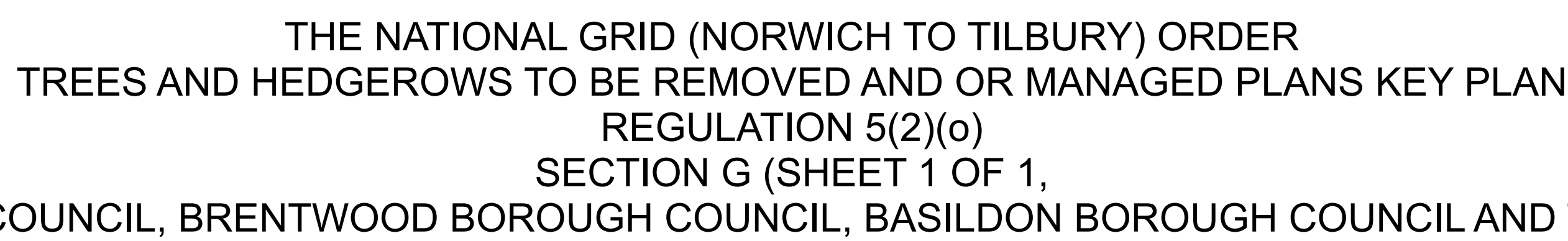
Final Issue A

August 2025

Planning Inspectorate Reference: EN020027

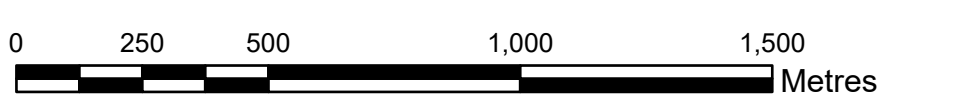
Infrastructure Planning (Applications: Prescribed Forms and Procedure)
Regulations 2009 Regulation 5(2)(c)

nationalgrid



Coordinate System: British National Grid

Sheet X Centroid Coordinate: 565210 Sheet Y Centroid Coordinate: 194573



BACKGROUND MAPPING INFORMATION HAS BEEN REPRODUCED FROM THE ORDNANCE SURVEY BY PERMISSION OF ORDNANCE SURVEY OF THE CONTROLLER OF HIS MAJESTY'S STATIONERY OFFICE. © CROWN COPYRIGHT AND DATABASE RIGHTS (2025) LICENCE OS100024241 AND AC0000807948.

[illegible]

Title

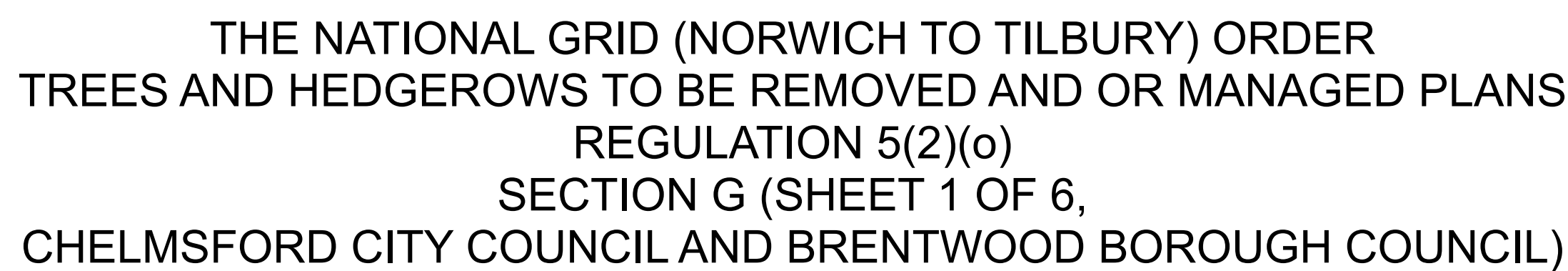
**THE NATIONAL GRID
(NORWICH TO TILBURY) ORDER
TREES AND HEDGEROWS TO BE REMOVED
AND OR MANAGED PLANS
REGULATION 5(2)(o)
SECTION G (SHEET 1 OF 1,
CHELMSFORD CITY COUNCIL,
BRENTWOOD BOROUGH COUNCIL,
BASILDON BOROUGH COUNCIL
AND THURROCK COUNCIL)**

nationalgrid

PINS Application Number
EN020027

National Grid Drawing Reference
AENC-LSTC-ENG-DWG-0002

| | | | |
|--------------|-------------------|--------------|--------------|
| <u>Scale</u> | <u>Sheet Size</u> | <u>Sheet</u> | <u>Issue</u> |
| 1:15,000 | A0 | SHEET 1 OF 1 | A |



- ## Notes
1. These plans are indicative and the Project will sit within the Order Limits. Due to the need for future flexibility, National Grid will be applying for Order Limits and Limits of Deviation within its DCO, within which any final alignment would lie.
 2. For additional detail on the plan rules, please refer to the Guide to Plans (document reference 2.0), located in the Volume 2 of the DCO application.
 3. This drawing is scaled at paper size A0, therefore any prints taken at smaller sizes will affect accuracy of the measurement units and should not be scaled against.
 4. Spatial locations and details of Tree Preservation Orders have been provided by relevant Local Planning Authorities and their projected spatial locations may differ slightly to those recorded during the agricultural survey undertaken by the Project. For the avoidance of doubt, references to any tree subject to a Tree Preservation Order on these plans include any such slight differences.
 5. The Tree Preservation Order data illustrated on the plans is limited to the arboriculture study area (which applies a 30 m buffer from the outer edge of the Order Limits).
 6. Reference to any tree, shrub, shrubby, hedgerow, or important hedgerow being removed, affected, damaged, potentially affected or unaffected is without prejudice to the exercise of any power in relation to such tree, shrub, shrubby, hedgerow, or important hedgerow on the terms of the DCO.
 7. The numbered references to trees comprised in any individual Tree Preservation Order shown on these plans include any tree to which the relevant line types as well as any tree overlapping any such tree, whether or not a line points to it or not.
 8. For the avoidance of doubt, where the section and/or local authority boundary and/or Order Limits shown on these plans overlap any tree, hedgerow or ancient woodland shown on these plans, it should be noted that they are partially obscured these plans and should not be interpreted as if the tree, hedgerow or ancient woodland in question is not so obscured.

A scale bar showing distances in metres. It is marked from 0 to 250 in increments of 50. The bar is divided into segments: 0-50 is black and white checkered, 50-100 is solid black, 100-150 is solid white, 150-200 is solid black, and 200-250 is solid white. The word 'Metres' is written at the end of the bar.

BACKGROUND MAPPING INFORMATION HAS BEEN REPRODUCED FROM THE ORDNANCE SURVEY BY PERMISSION OF ORDNANCE SURVEY OF THE CONTROLLER OF HIS MAJESTY'S STATIONERY OFFICE. © CROWN COPYRIGHT AND DATABASE RIGHTS (2025) LICENCE OS100024241 AND AC0000807948.

| | | | | | | |
|-------|----------|--------------------|-------|---------|----------|--|
| | | | | | | |
| | | | | | | |
| | | | | | | |
| | | | | | | |
| | | | | | | |
| | | | | | | |
| | | | | | | |
| | | | | | | |
| A | AUG-2025 | For DCO submission | EOS | JPC | KR | |
| Issue | Date | Remarks | Drawn | Checked | Approved | |

Title

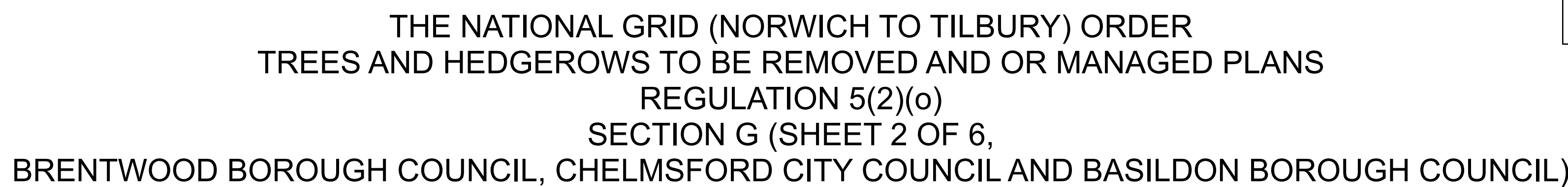
THE NATIONAL GRID
(NORWICH TO TILBURY) ORDER
TREES AND HEDGEROWS TO BE REMOVED
AND OR MANAGED PLANS
REGULATION 5(2)(o)
SECTION G (SHEET 1 OF 6,
CHELMSFORD CITY COUNCIL
AND BRENTWOOD BOROUGH COUNCIL)

| | |
|--------------------------------|----------|
| <u>PINS Application Number</u> | EN020027 |
|--------------------------------|----------|

National Grid Drawing Reference
AENC-LSTC-ENG-DWG-0002

| | | | |
|--------------|-------------------|--------------|--------------|
| <u>Scale</u> | <u>Sheet Size</u> | <u>Sheet</u> | <u>Issue</u> |
| 1:2,500 | A0 | SHEET 1 OF 6 | A |

FOR CONTINUATION SEE SHEET 2



- - - Local authority boundary
- - - Section boundary & local authority boundary
- ███ Section boundary
- Sheet index cutlines
- Order Limits
- Individual Tree Preservation Order
- ▨ Tree Preservation Order groups
- ▨ Ancient woodland (Natural England)
- ▨ Project defined ancient woodland
- Important hedgerows

Veteran tree

- ★ Removed
- ★ Affected managed
- ★ Potentially affected
- ★ Unaffected

Tree

- Removed
- Affected managed
- Potentially affected
- Unaffected

Tree groups

- Removed
- Affected managed
- Potentially affected
- Unaffected

Hedgerows

- Removed
- Affected managed
- Potentially affected
- Unaffected

1. These plans are indicative and the Project will sit within the Order Limits. Due to the need for future flexibility, National Grid will be applying for Order Limits and Limits of Deviation within its DCO, within which any final alignment would lie.
2. For additional detail on the plan surveys, please refer to the Guide to Plans (document reference 2.00), located in the Volume 2 of the DCO application.
3. This drawing is scaled at paper size A0, therefore any prints taken at smaller sizes will affect accuracy of the measurement units and should not be scaled against.
4. Spatial locations and details of Tree Preservation Orders have been provided by relevant Local Planning Authorities and their projected spatial locations may affect slightly to those recorded during the arboricultural survey undertaken by the Project. For the avoidance of doubt, references to any tree subject to a Tree Preservation Order on these plans include any such slight differences.
5. The Tree Preservation Order data illustrated on the plans is limited to the arboriculture study area (which applies a 30 m buffer from the outer edge of the Order Limits).
6. Reference to any tree, shrub, shrubby, hedgerow, or important hedgerow being removed, affected, managed, potentially affected or protected is without prejudice to the exercise of any power in relation to such tree, shrub, shrubby, hedgerow, or important hedgerow on the terms of the DCO.
7. The numbered references to trees comprised in any Individual Tree Preservation Order shown on these plans include any tree to which the relevant line points as well as any tree overlying any such tree, whether or not a line points to it or not.
8. For the avoidance of doubt, where the section and/or local authority boundary and/or Order Limits shown on these plans overlie any tree, hedgerow or ancient woodland shown on these plans such that they are partially obscured these plans are to be interpreted as showing any tree, hedgerow or ancient woodland in question is not so obscured.

A scale bar with markings at 0, 50, 100, 150, 200, and 250 metres.

BACKGROUND MAPPING INFORMATION HAS BEEN REPRODUCED FROM THE ORDNANCE SURVEY BY PERMISSION OF ORDNANCE SURVEY OF THE CONTROLLER OF HIS MAJESTY'S STATIONERY OFFICE. © CROWN COPYRIGHT AND DATABASE RIGHTS (2025) LICENCE OS100024241 AND AC0000807948.

| | | | | | |
|-------|----------|--------------------|-------|---------|----------|
| | | | | | |
| | | | | | |
| | | | | | |
| | | | | | |
| | | | | | |
| | | | | | |
| A | AUG-2025 | For DCO submission | EOS | JPC | KR |
| Issue | Date | Remarks | Drawn | Checked | Approved |

Title THE NATIONAL GRID
(NORWICH TO TILBURY) ORDER
TREES AND HEDGEROWS TO BE REMOVED
AND OR MANAGED PLANS
REGULATION 5(2)(o)
SECTION G (SHEET 2 OF 6,
BRENTWOOD BOROUGH COUNCIL,
CHELMSFORD CITY COUNCIL
AND BASILDON BOROUGH COUNCIL)

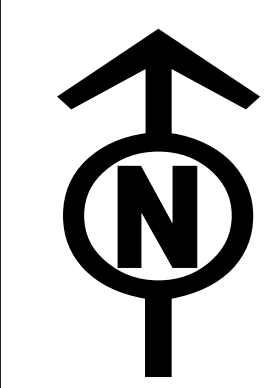


PINS Application Number EN020027

| | |
|--|--|
| | |
|--|--|

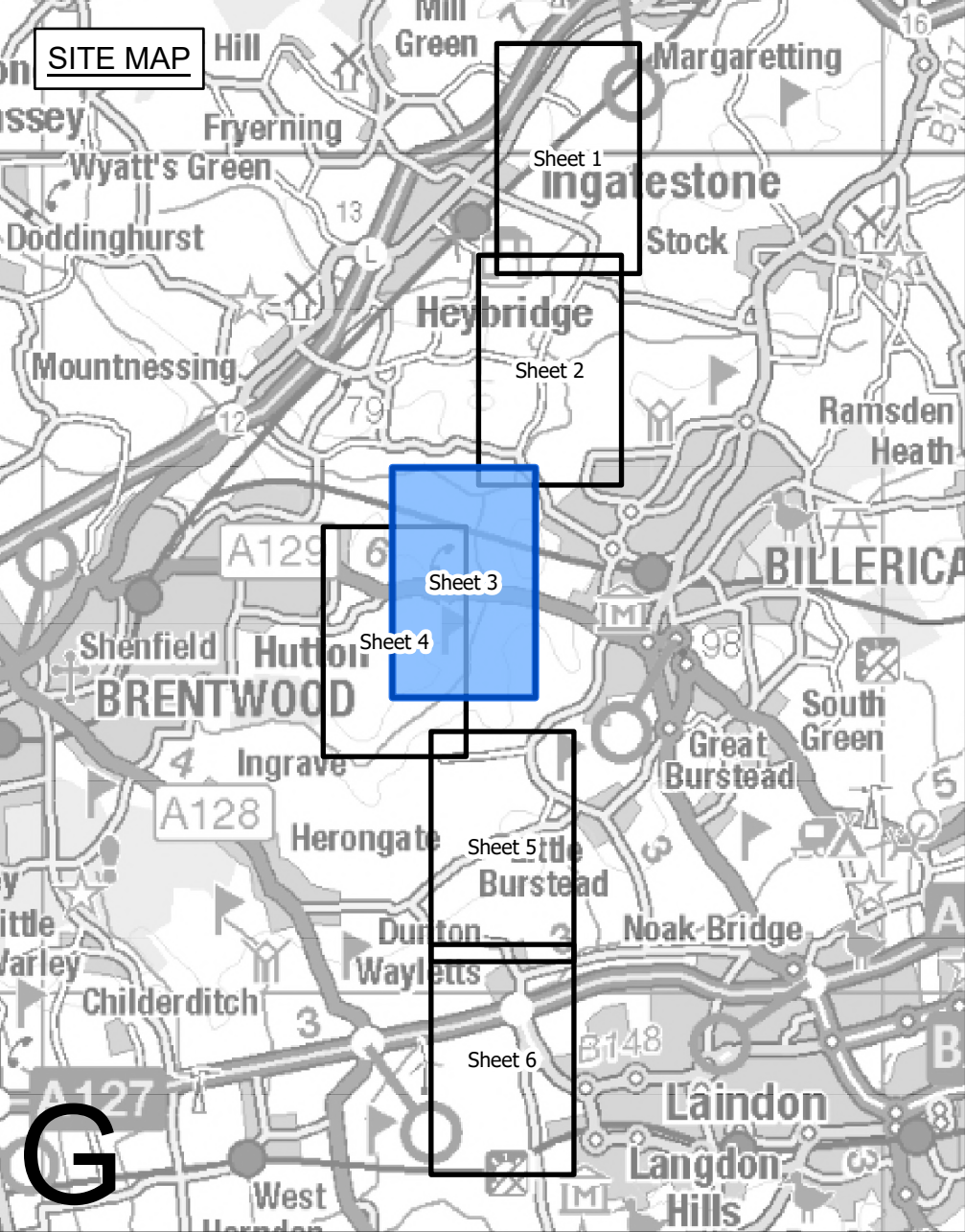
National Grid Drawing Reference
AENC-LSTC-ENG-DWG-0002

| <u>Scale</u> | <u>Sheet Size</u> | <u>Sheet</u> | <u>Issue</u> |
|--------------|-------------------|--------------|--------------|
|--------------|-------------------|--------------|--------------|



THE NATIONAL GRID (NORWICH TO TILBURY) ORDER
TREES AND HEDGEROWS TO BE REMOVED AND OR MANAGED PLANS
REGULATION 5(2)(o)
SECTION G (SHEET 3 OF 6,
BRENTWOOD BOROUGH COUNCIL AND BASILDON BOROUGH COUNCIL)

Application Document 2.16



Legend

- Local authority boundary
- Section boundary & local authority boundary
- Section boundary
- Sheet index cutlines
- Order Limits
- Individual Tree Preservation Order
- Tree Preservation Order groups
- Ancient woodland (Natural England)
- Project defined ancient woodland
- Important hedgerows

Veteran tree

- Removed
- Affected managed
- Potentially affected
- Unaffected

Tree

- Removed
- Affected managed
- Potentially affected
- Unaffected

Tree groups

- Removed
- Affected managed
- Potentially affected
- Unaffected

Hedgerows

- Removed
- Affected managed
- Potentially affected
- Unaffected

- Notes**
- These plans are indicative and the Project will sit within the Order Limits. Due to the need for future flexibility, National Grid will be applying for Order Limits and Limits of Deviation within its DCO, within which any final alignment would lie.
 - For additional detail on the plan suites, please refer to the Guide to Plans (document reference 2.0), located in the Volume 2 of the DCO application.
 - This drawing is scaled at paper size A0, therefore any prints taken at smaller sizes will affect accuracy of the measurement units and should not be scaled against.
 - Spatial locations and details of Tree Preservation Orders have been provided by relevant Local Planning Authorities and their projected spatial locations may differ slightly to those recorded during the arboricultural survey undertaken by the Project. For the avoidance of doubt, references to any tree subject to a Tree Preservation Order on these plans include any such slight differences.
 - The Tree Preservation Order data illustrated on the plans is limited to the arboriculture study area (which applies a 30 m buffer from the outer edge of the Order Limits).
 - Reference to any tree, shrub, shrubbery, hedgerow, or important hedgerow being removed, affected managed, potentially affected or unaffected is without prejudice to the exercise of any power in relation to such tree, shrub, shrubbery, hedgerow, or important hedgerow on the terms of the DCO.
 - The numbered references to trees comprised in any Individual Tree Preservation Order shown on these plans include any tree to which the relevant line points as well as any tree overlapping any such tree, whether or not a line points to it or not.
 - For the avoidance of doubt, where the section and/or local authority boundary and/or Order Limits shown on these plans overlie any tree, hedgerow or ancient woodland shown on these plans such that they are partially obscured these plans are to be interpreted as if the tree, hedgerow or ancient woodland in question is not so obscured.

Coordinate System: British National Grid
Sheet X Centroid Coordinate: 565005 Sheet Y Centroid Coordinate: 194885

0 50 100 150 200 250 Metres

BACKGROUND MAPPING INFORMATION HAS BEEN REPRODUCED FROM THE ORDNANCE SURVEY BY PERMISSION OF ORDNANCE SURVEY OF THE CONTROLLER OF HIS MAJESTY'S STATIONERY OFFICE. © CROWN COPYRIGHT AND DATABASE RIGHTS (2025) LICENCE OS100024241 AND AC000807948.

| A | AUG-2025 | For DCO submission | EOS | JPC | KR |
|-------|----------|--------------------|-------|---------|----------|
| Issue | Date | Remarks | Drawn | Checked | Approved |

Title

THE NATIONAL GRID (NORWICH TO TILBURY) ORDER
TREES AND HEDGEROWS TO BE REMOVED
AND OR MANAGED PLANS
REGULATION 5(2)(o)
SECTION G (SHEET 3 OF 6,
BRENTWOOD BOROUGH COUNCIL
AND BASILDON BOROUGH COUNCIL)

nationalgrid

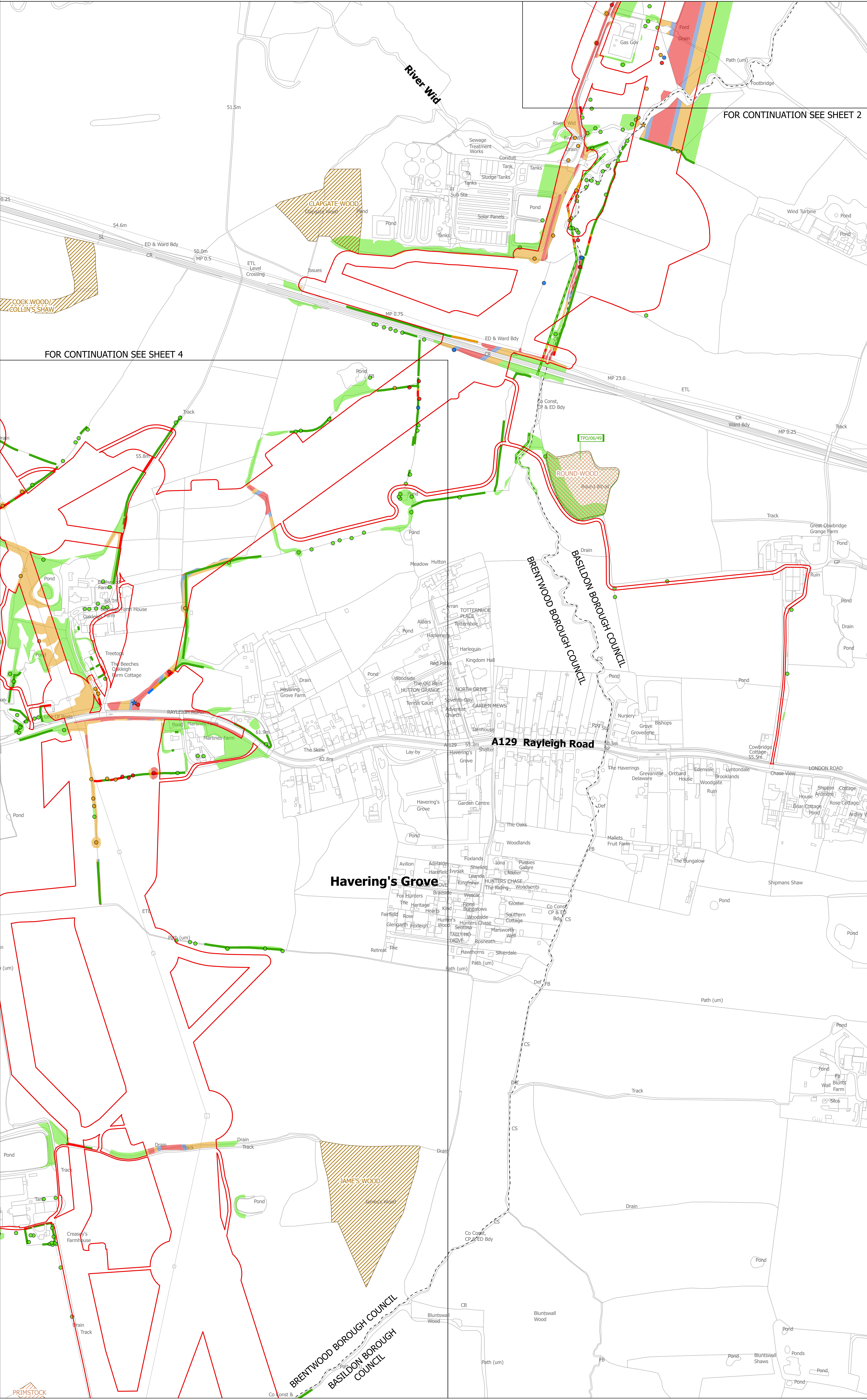
PINS Application Number

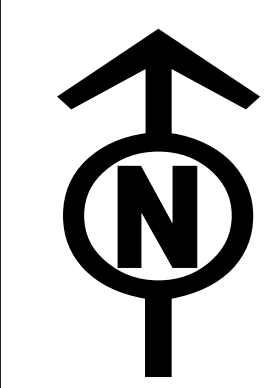
EN020027

National Grid Drawing Reference

AENC-LSTC-ENG-DWG-0002

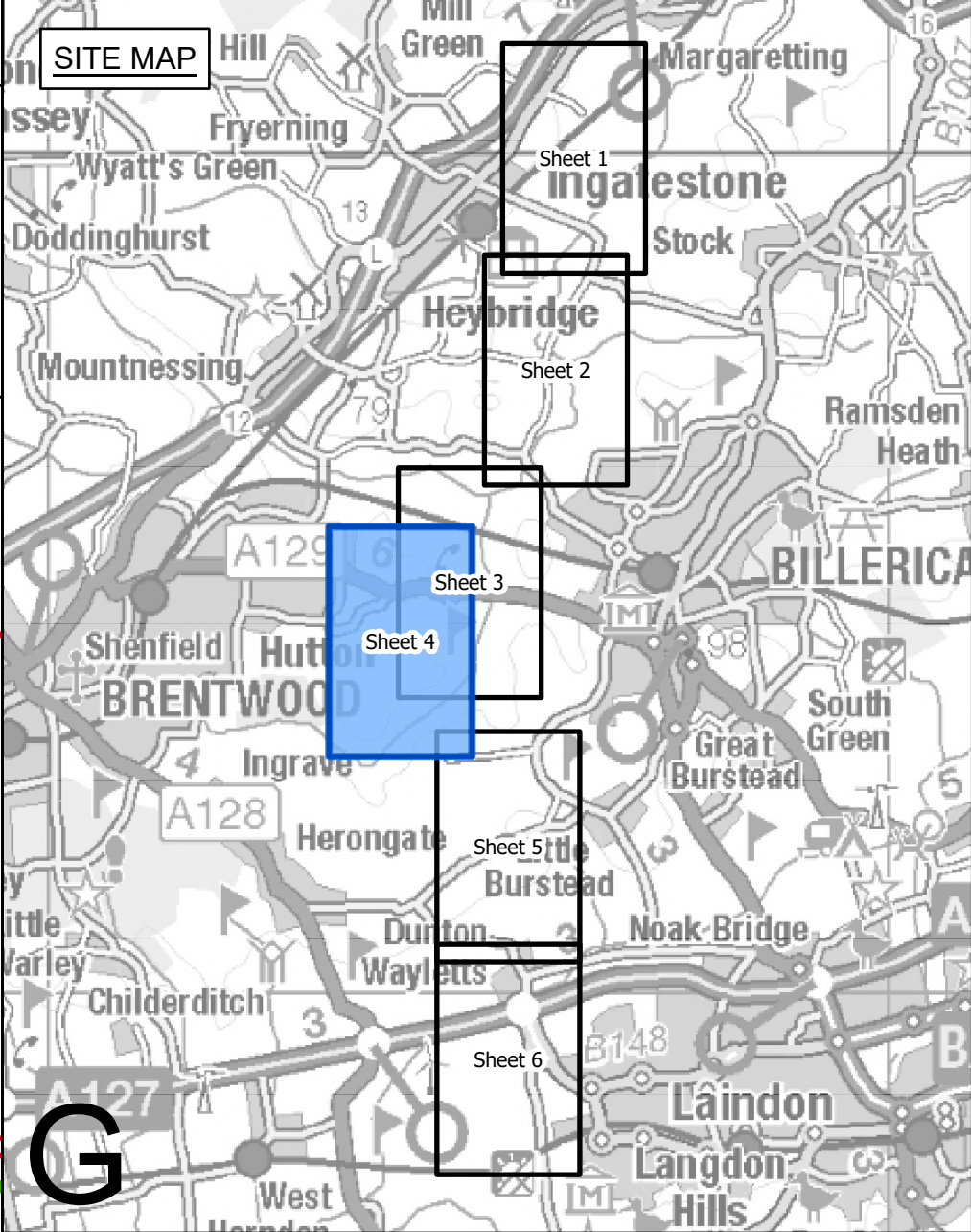
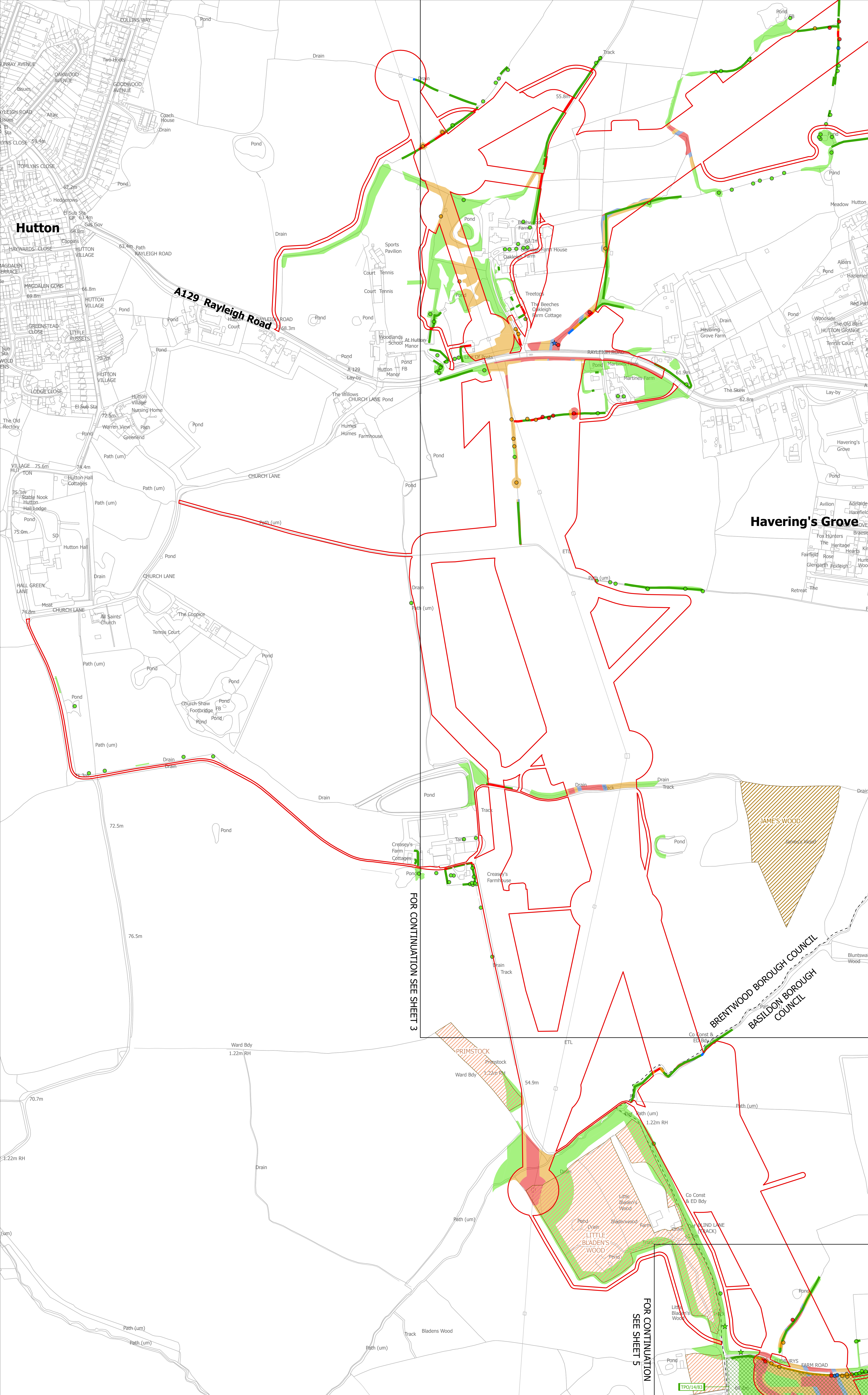
| Scale | Sheet Size | Sheet | Issue |
|---------|------------|--------------|-------|
| 1:2,500 | A0 | SHEET 3 OF 6 | A |





THE NATIONAL GRID (NORWICH TO TILBURY) ORDER
TREES AND HEDGEROWS TO BE REMOVED AND OR MANAGED PLANS
REGULATION 5(2)(o)
SECTION G (SHEET 4 OF 6,
BRENTWOOD BOROUGH COUNCIL AND BASILDON BOROUGH COUNCIL)

Application Document 2.16

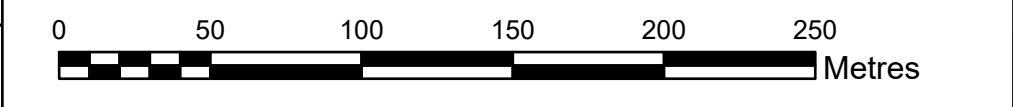


Legend

- Local authority boundary
- Section boundary & local authority boundary
- Section boundary
- Sheet index cutlines
- Order Limits
- Individual Tree Preservation Order
- Tree Preservation Order groups
- Ancient woodland (Natural England)
- Project defined ancient woodland
- Important hedgerows
- Veteran tree**
- Removed
- Affected managed
- Potentially affected
- Unaffected
- Tree**
- Removed
- Affected managed
- Potentially affected
- Unaffected
- Tree groups**
- Removed
- Affected managed
- Potentially affected
- Unaffected
- Hedgerows**
- Removed
- Affected managed
- Potentially affected
- Unaffected

- Notes**
- These plans are indicative and the Project will sit within the Order Limits. Due to the need for future flexibility, National Grid will be applying for Order Limits and Limits of Deviation within its DCO, within which any final alignment would lie.
 - For additional detail on the plan suites, please refer to the Guide to Plans (document reference 2.0), located in the Volume 2 of the DCO application.
 - This drawing is scaled at paper size A0, therefore any prints taken at smaller sizes will affect accuracy of the measurement units and should not be scaled against.
 - Spatial locations and details of Tree Preservation Orders have been provided by relevant Local Planning Authorities and their projected spatial locations may differ slightly to those recorded during the arboricultural survey undertaken by the Project. For the avoidance of doubt, references to any tree subject to a Tree Preservation Order on these plans include any such slight differences.
 - The Tree Preservation Order data illustrated on the plans is limited to the arboriculture study area (which applies a 30 m buffer from the outer edge of the Order Limits).
 - Reference to any tree, shrub, shrubbery, hedgerow, or important hedgerow being removed, affected managed, potentially affected or unaffected is without prejudice to the exercise of any power in relation to such tree, shrub, shrubbery, hedgerow, or important hedgerow on the terms of the DCO.
 - The numbered references to trees comprised in any Individual Tree Preservation Order shown on these plans include any tree to which the relevant line points as well as any tree overlapping any such tree, whether or not a line points to it or not.
 - For the avoidance of doubt, where the section and/or local authority boundary and/or Order Limits shown on these plans overlap any tree, hedgerow or ancient woodland shown on these plans such that they are partially obscured these plans are to be interpreted as if the tree, hedgerow or ancient woodland in question is not so obscured.

Coordinate System: British National Grid
Sheet X Centroid Coordinate: 564179 Sheet Y Centroid Coordinate: 194182



BACKGROUND MAPPING INFORMATION HAS BEEN REPRODUCED FROM THE ORDNANCE SURVEY BY PERMISSION OF ORDNANCE SURVEY OF THE CONTROLLER OF HIS MAJESTY'S STATIONERY OFFICE. © CROWN COPYRIGHT AND DATABASE RIGHTS (2025) LICENCE OS100024241 AND AC0000807948.

| Issue | Date | Remarks | Drawn | Checked | Approved |
|-------|----------|--------------------|-------|---------|----------|
| A | AUG-2025 | For DCO submission | EOS | JPC | KR |

Title

THE NATIONAL GRID (NORWICH TO TILBURY) ORDER
TREES AND HEDGEROWS TO BE REMOVED
AND OR MANAGED PLANS
REGULATION 5(2)(o)
SECTION G (SHEET 4 OF 6,
BRENTWOOD BOROUGH COUNCIL
AND BASILDON BOROUGH COUNCIL)

nationalgrid

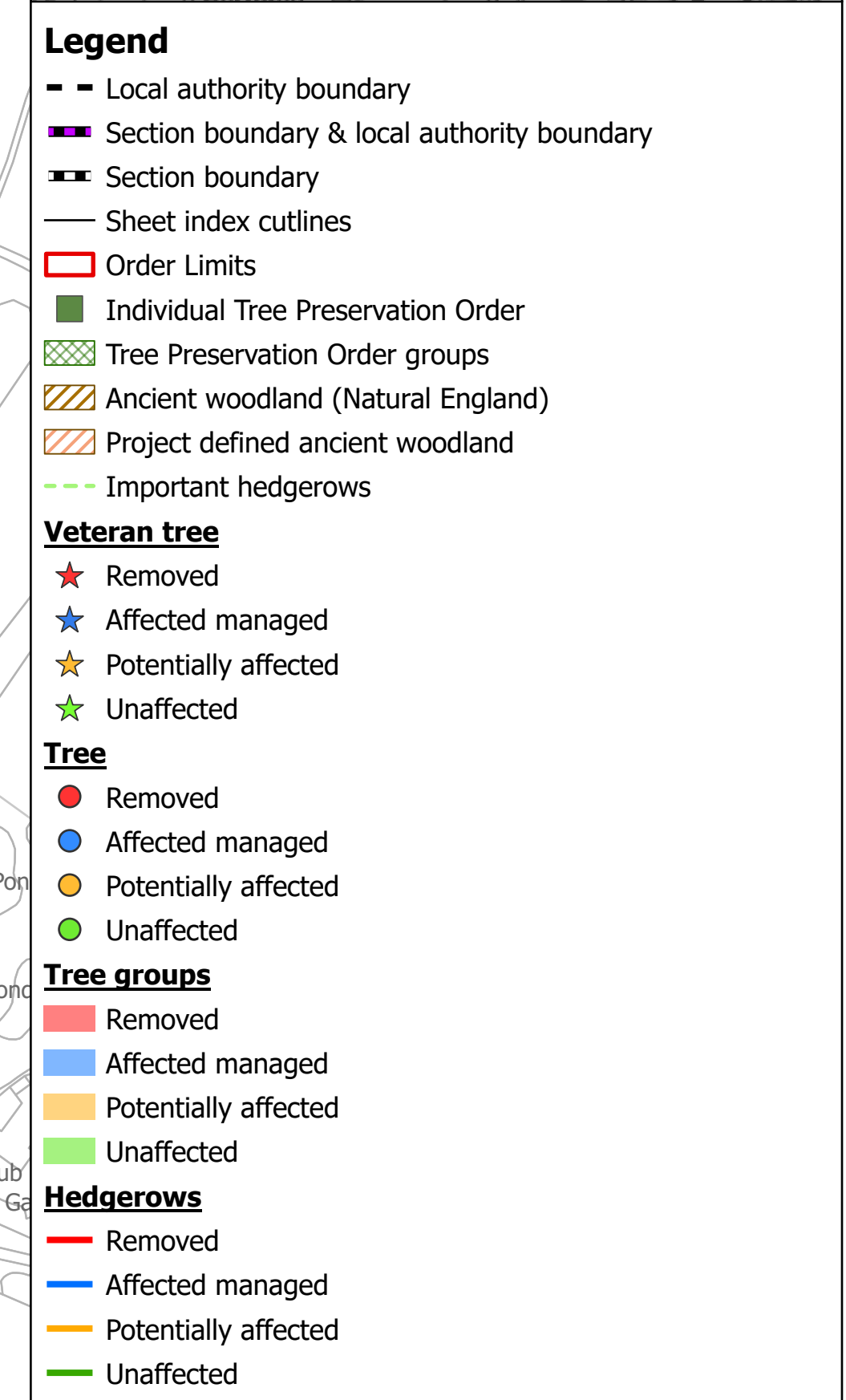
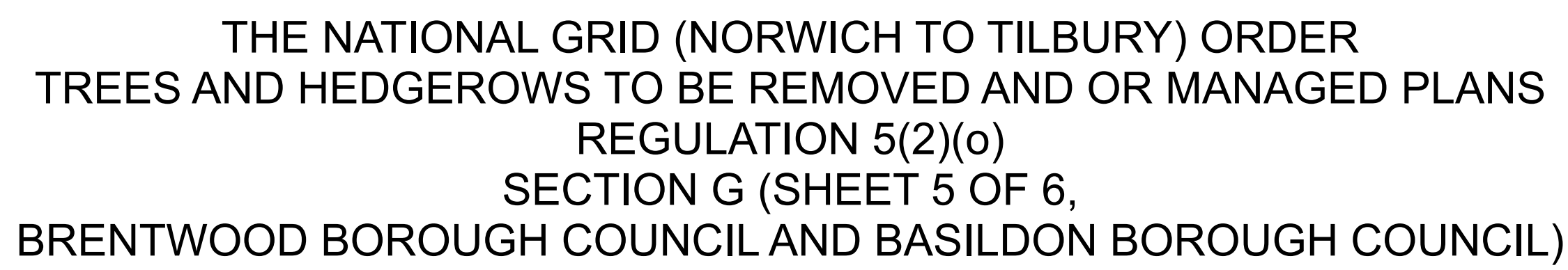
PINS Application Number

EN020027

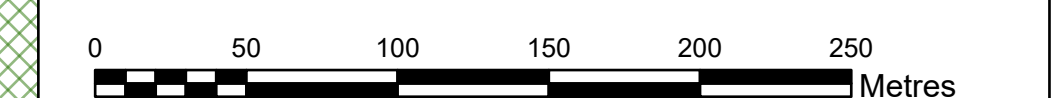
National Grid Drawing Reference

AENC-LSTC-ENG-DWG-0002

| Scale | Sheet Size | Sheet | Issue |
|---------|------------|--------------|-------|
| 1:2,500 | A0 | SHEET 4 OF 6 | A |



- | | |
|--|-------------------------------------|
| Coordinate System: British National Grid | |
| Sheet X Centroid Coordinate: 565465 | Sheet Y Centroid Coordinate: 191738 |



BACKGROUND MAPPING INFORMATION HAS BEEN REPRODUCED FROM THE ORDNANCE SURVEY BY PERMISSION OF ORDNANCE SURVEY OF THE CONTROLLER OF HIS MAJESTY'S STATIONERY OFFICE. © CROWN COPYRIGHT AND DATABASE RIGHTS (2025) LICENCE OS100024241 AND AC0000807948.

| | | | | | |
|-------|----------|--------------------|-------|---------|----------|
| | | | | | |
| | | | | | |
| | | | | | |
| | | | | | |
| | | | | | |
| | | | | | |
| A | AUG-2025 | For DCO submission | EOS | JPC | KR |
| Issue | Date | Remarks | Drawn | Checked | Approved |

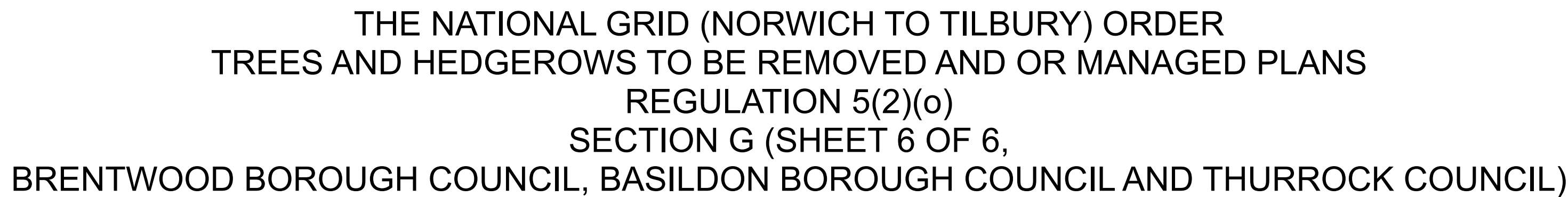
| Title | Ref |
|--|-----|
| <p>THE NATIONAL GRID (NORWICH TO TILBURY) ORDER TREES AND HEDGEROWS TO BE REMOVED AND OR MANAGED PLANS REGULATION 5(2)(o) SECTION G (SHEET 5 OF 6, BRENTWOOD BOROUGH COUNCIL AND BASILDON BOROUGH COUNCIL)</p> | |

nationalgrid

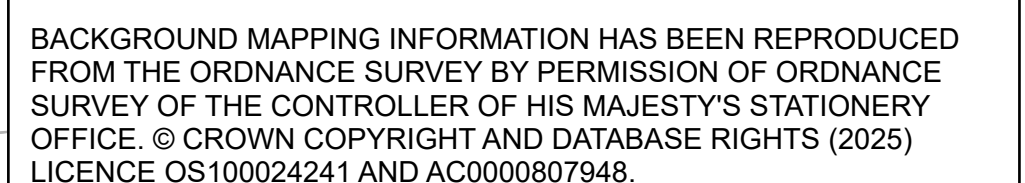
| | |
|--------------------------------|----------|
| <u>PINS Application Number</u> | EN020027 |
|--------------------------------|----------|

National Grid Drawing Reference

| | | | |
|--------------|-------------------|--------------|--------------|
| <u>Scale</u> | <u>Sheet Size</u> | <u>Sheet</u> | <u>Issue</u> |
| 1:2,500 | A0 | SHEET 5 OF 6 | A |



Coordinate System: British National Grid
Sheet X Centroid Coordinate: 565465 Sheet Y Centroid Coordinate: 189201



| | | | | | |
|-------|----------|--------------------|-------|---------|----------|
| A | AUG-2025 | For DCO submission | EOS | JPC | KR |
| Issue | Date | Remarks | Drawn | Checked | Approved |

nationalgrid

National Grid Drawing Reference

| | | | |
|--------------|-------------------|--------------|--------------|
| <u>Scale</u> | <u>Sheet Size</u> | <u>Sheet</u> | <u>Issue</u> |
| 1:2,500 | A0 | SHEET 6 OF 6 | A |